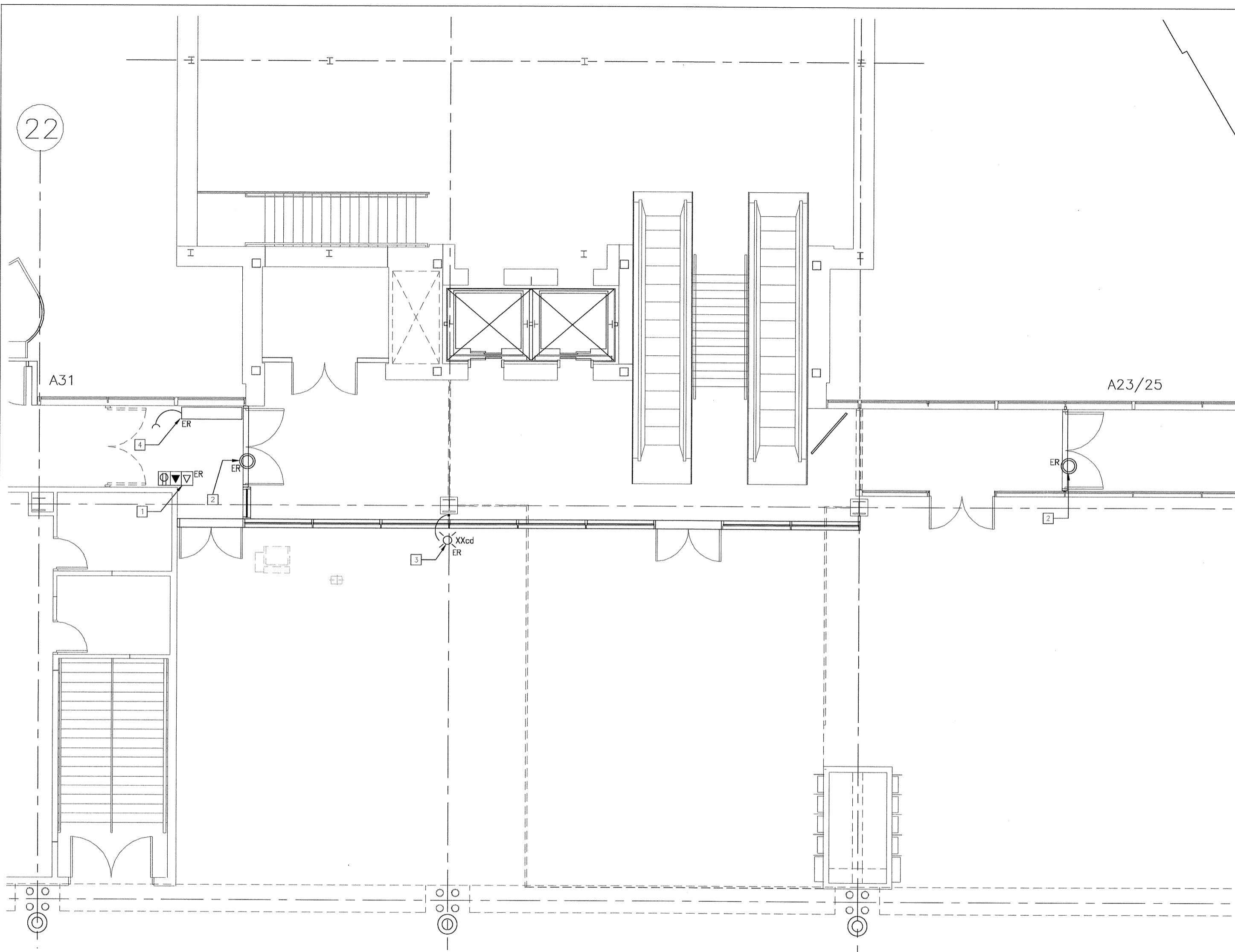
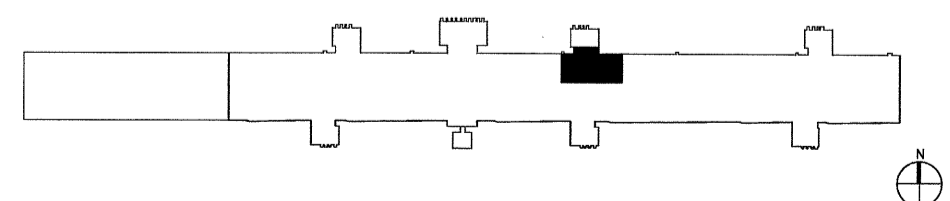


- GENERAL DRAWING NOTES**
- ① ALL LIGHT FIXTURES AND ASSOCIATED SWITCH CONTROLS, TELEPHONE AND DATA OUTLETS AND SWITCHES IN THIS AREA OF WORK ARE EXISTING TO REMAIN U.O.N.
 - ② HANDLING AND REMOVAL OF ANY HAZARDOUS MATERIALS (PCB BALLAST AND/OR T12 FLUORESCENT LAMPS CONTAINING MERCURY) SHALL BE IN STRICT COMPLIANCE WITH THE BUILDING OWNER'S GUIDELINES.
 - ③ PROVIDE TEMPORARY POWER FOR LIGHTING AND POWER EQUIPMENT AS REQUIRED. TEMPORARY LIGHTING AND POWER SHALL MEET ALL O.S.H.A. REQUIREMENTS AND LOCAL CODES.
 - ④ LOCATE, IDENTIFY AND PROTECT ELECTRICAL SERVICES PASSING THRU DEMOLITION AREA AND SERVING OTHER AREAS OUTSIDE DEMOLITION LIMITS. MAINTAIN SERVICES TO AREAS DEMOLITION LIMITS. WHEN SERVICES MUST BE INTERRUPTED, INSTALL TEMPORARY SERVICES FOR AFFECTED AREAS.
 - ⑤ ADVANCE NOTICE SHALL BE GIVEN TO MWAA BEFORE COMMENCEMENT OF WORK ON ANY ELECTRICAL CIRCUITRY, WHETHER OR NOT AND OUTAGE IS REQUIRED.
 - ⑥ PROTECT ADJACENT MATERIALS INDICATED TO REMAIN. INSTALL AND MAINTAIN DUST AND NOISE BARRIERS TO KEEP DIRT, DUST AND NOISE FROM BEING TRANSMITTED TO ADJACENT AREAS. REMOVE PROTECTION AND BARRIERS AFTER DEMOLITION OPERATIONS ARE COMPLETE.

- PLAN NOTES**
- ① REMOVE ALL DEVICES SHOWN TO BE DEMOLISHED BRANCH CIRCUITRY BACK TO THE NEAREST DEVICE THAT IS EXISTING TO REMAIN. MAINTAIN THE EXISTING BRANCH CIRCUITRY. FOR THE RECONNECTION OF THE NEW WIRING DEVICES AT THE CONSTRUCTION PHASE. SEE THE POWER CONSTRUCTION PLAN.
 - ② REMOVE EXISTING LIGHTING FIXTURE AND ASSOCIATED SWITCHING CIRCUITRY BACK TO THE NEAREST EXISTING TO REMAIN LIGHT FIXTURE. SEE THE LIGHTING CONSTRUCTION PLAN FOR THE NEW LIGHT AND NEW ASSOCIATED SWITCHING CIRCUITRY.
 - ③ REMOVE THE FIRE ALARM STROBE FOR RE-INSTALLATION ON THE EAST FACE OF THE EXISTING COLUMN. FIELD COORDINATE THIS WORK WITH THE FIRE ALARM CONTRACTOR. REMOVE ALL NECESSARY CONDUIT AND WIRE TO MAKE PROVISIONS FOR THE NEW STROBES INSTALLATION UNDER THE CONSTRUCTION PHASE OF THE PROJECT. REFER TO THE FIRE ALARM CONSTRUCTION PLAN.
 - ④ REMOVE L.E.D. WAYFINDING SIGN FOR REINSTALLATION ABOVE NEW DOOR LOCATION. PROVIDE COVER TO WIRING PENETRATION ABANDONED IN WINDOW MULLION.



ELECTRICAL DEMOLITION PLAN
SCALE: 1/4" = 1'-0"



NO.	REVISION	DATE

PGAL
201 N UNION ST.
SUITE 500
ALEXANDRIA,
VIRGINIA 22314
(T) 703 836 0588
(F) 703 836 8027

DATE August 31, 2011
SCALE 1/4" = 1'-0"
DESIGNED DLW
CHECKED RDZ DRAWN DLW
ACCEPTED
SUBMITTED BJL
APPROVED DRH
FDH



METROPOLITAN WASHINGTON AIRPORTS AUTHORITY

OFFICE OF ENGINEERING DESIGN DEPARTMENT

GATE A23/25 - A31
STERILE CORRIDOR RENOVATION
WASHINGTON DULLES INTERNATIONAL AIRPORT
WASHINGTON, DC

ELECTRICAL DEMOLITION PLAN

PROJECT IDENTIFIER **IT1111**
SHEET NAME EL02.001
VOLUME NUMBER 1 of 1
SHEET NUMBER 17 of 35