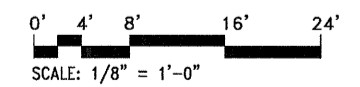


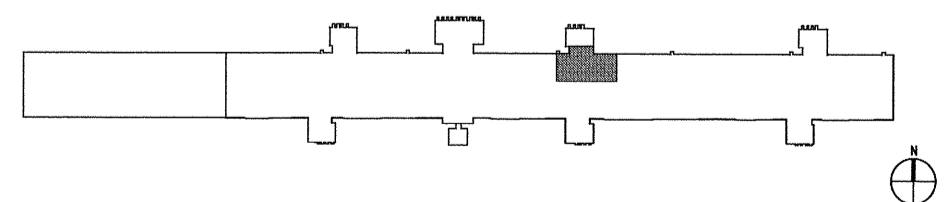
01 CONCOUSE LEVEL EGRESS PLAN  
AR03.001|AR03.001 1/8" = 1'-0"



**CODE SUMMARY**  
 BUILDING TYPE - IIC FULLY SPRINKLERED  
 OCCUPANCY - ASSEMBLY (A-3) COVERED MALL  
 USE GROUP - ASSEMBLY

NO CHANGE IN OCCUPANCY

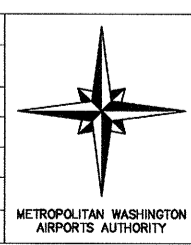
GOVERNING CODES:  
 ALL WORK TO BE IN CONFORMANCE WITH THE VIRGINIA USBC 2009,  
 WHICH ADOPTS AND AMENDS,  
 2009 INTERNATIONAL BUILDING CODE (IBC)  
 2009 INTERNATIONAL MECHANICAL CODE (IMC)  
 2008 NFPA 70  
 ACCESSABILITY: ICC/ANSI A117.1



NO.	REVISION	DATE

**PGAL**  
 201 N. UNION ST.  
 SUITE 500  
 ALEXANDRIA,  
 VIRGINIA 22314  
 (T) 703 836 0588  
 (F) 703 836 8027

DATE August 31, 2011  
 SCALE 1/8" = 1'-0"  
 DESIGNED KB  
 CHECKED DMC DRAWN RAH  
 ACCEPTED B.J.L.  
 SUBMITTED DRH  
 APPROVED F.D.H.



**METROPOLITAN WASHINGTON AIRPORTS AUTHORITY**  
 OFFICE OF ENGINEERING DESIGN DEPARTMENT

GATE A23/25 - A31 STERILE CORRIDOR RENOVATION WASHINGTON DULLES INTERNATIONAL AIRPORT WASHINGTON, DC		PROJECT IDENTIFIER <b>IT1111</b>
<b>EGRESS PLAN</b>		SHEET NAME GN04.001
		VOLUME NUMBER 1 of 1
		SHEET NUMBER 6 of 35

IT1111.GN03001.dwg